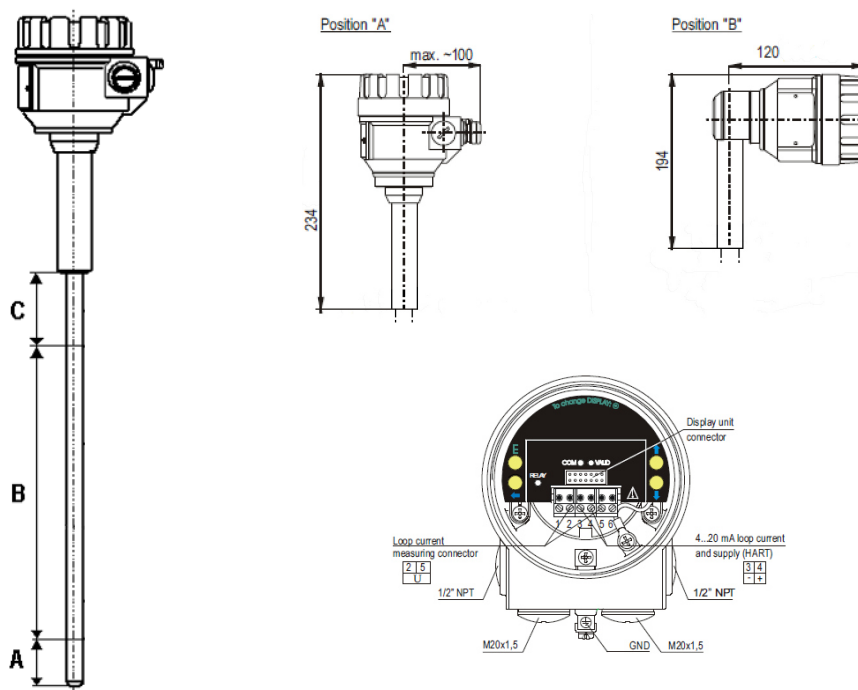


ACCESSORIES FOR MAGNETIC LEVEL GAUGES

LEVEL TRANSMITTER



Technical data:

Code	DS LTM-MTU-5- ...
Contact type	Magnetostrictive
Measured process value	Liquid level, distance, volume
Housing material	Paint coated aluminium
Tube material	Stainless steel 316 Ti
Measure A	50 mm (Standard) Other measures on request
Measure C	120 mm (Standard) 140 mm (High temperature)
Ambient temperature	-40 ... 70°C, with display -25 ... 70°C On request: execution for high temperature with thermal insulation
Output	Analogue: 4 ... 20 mA (Limit values: 3,9 ... 20,5 mA) On request: with SAP 300 graphic display
Damping time	Adjustable 0 s ... 99 s
Error indication	22 mA oppure 3,8 mA or "holding"
Output load	$R_t = (U_t - 12,5V) / 0,02 A$, $U_t =$ Power supply voltage
Power supply	12,5 V - 36 V DC, 2 wires
Electrical protection	Class III
Ingress protection	IP 67
Electric connection	2x M20x1,5 plastic cable glands for 6 ... 12 mm + 2x NPT 1/2" internal thread for cable protective pipe terminal block for 0,5 ... 1,5 mm ² (AWG 20 ... AWG 15)
Resolution	1 mm
Nonlinearity	± 2 mm or $\pm 0,02\%$
Hysteresis	$< \pm 1$ mm
Temperature error	0,04 mm / 10°C (between -25°C ... 50°C)
Current output data	Resolution: 2 μ A, Accuracy: 10 μ A, Temperature error: 200 ppm/°C
Accessories	SAP-300 Plug-in display module