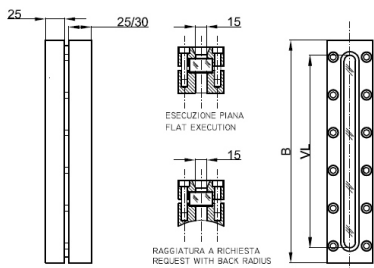


WELD-ON GLASS LEVEL GAUGE REFLEX and TRANSPARENT PN40 / Class 300

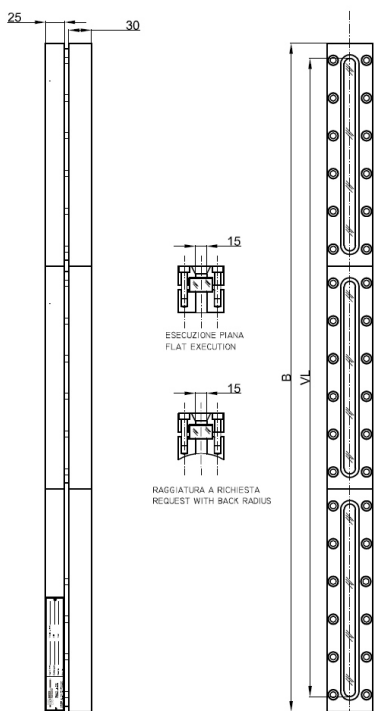
DS LG - RCW / TCW

Code: DS LG-RCW...-CS/CS
Code: DS LG-TCW...-CS/CS

REFLEX
TRANSPARENT



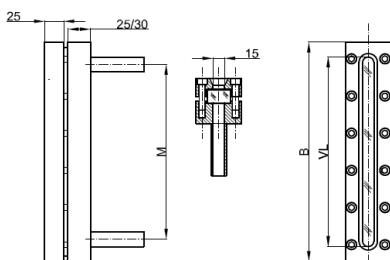
RCW/TCW



RCWM/TCWM

Code: DS LG-RCWSP...-CS/CS
Code: DS LG-TCWSP...-CS/CS

REFLEX
TRANSPARENT



RCWSP/TCWSP

Technical data

Service conditions

Max Pressure: PN40; Class 300 (A105: 51 bar @ 38°C; AISI 316L: 49,6 bar @ 38°C)
Option: PN100; Class 600 (A105: 102 bar @ 38°C; AISI 316L: 99,3 bar @ 38°C)
Max Temperature: 300°C (According to DIN 7081 for glasses, see page 1.69)

Total length

Standard: see below table
Option: On request intermediate lengths and over 1.080 mm

Process connections

Standard: Drilling on the whole visible length
Option: Two holes Ø 15 mm at the opposite ends of the visible length or two pipes welded at the centre-to-centre distance requested (See below drawing)

Execution of housing to be weld

Standard: flat
Option: On request with back radius

Materials (Standard)

Execution:	CS/CS	SS/CS	SS/SS
Housing body:	ASTM A105	AISI 316L	AISI 316L
Cover:	ASTM A105	ASTM A105	AISI 316L
Bolts and nuts:	Carbon steel galvanized	Carbon steel galvanized	AISI 316

Gaskets

Standard: graphite Option: PTFE

Glasses

Reflex and Transparent - Borosilicate glass, "extra hard" and thermally pre-stressed - According to DIN 7081

Standard: fitted with type B (See page 1.69)
Option: type A (See page 1.69)

Accessories

See from page 1.55

Weights

See below table

Tightening torque of screws

Standard: 25-30 Nm

Spare parts

See from page 1.69

Recommendation

For requested visible lengths over 320 mm, to avoid the tank structure weakness, it is recommended to weld on the tank more level gauges positioned on different axes

CODE	TYPE	BODY Length [mm]	VISIBLE Length [mm]	GLASS Length [mm]	WEIGHT Housing [Kg]
	x No. el.	B	VL	x No. elements	
11	1x1	130	95	115	2,5
12	2x1	155	120	140	3,0
13	3x1	180	145	165	3,4
14	4x1	205	170	190	3,9
15	5x1	235	200	220	4,7
16	6x1	265	230	250	5,1
17	7x1	295	260	280	5,6
18	8x1	335	300	320	6,0
19	9x1	360	320	340	6,9
24	4x2	410	375	190x2	7,8
25	5x2	470	435	220x2	9,4
26	6x2	530	495	250x2	10,2
27	7x2	590	555	280x2	11,2
28	8x2	670	635	320x2	12,0
29	9x2	720	680	340x2	13,8
36	6x3	795	760	250x3	15,3
37	7x3	885	850	280x3	16,8
38	8x3	1005	970	320x3	18,0
39	9x3	1080	1040	340x3	20,7

Tab. RCW/TCW